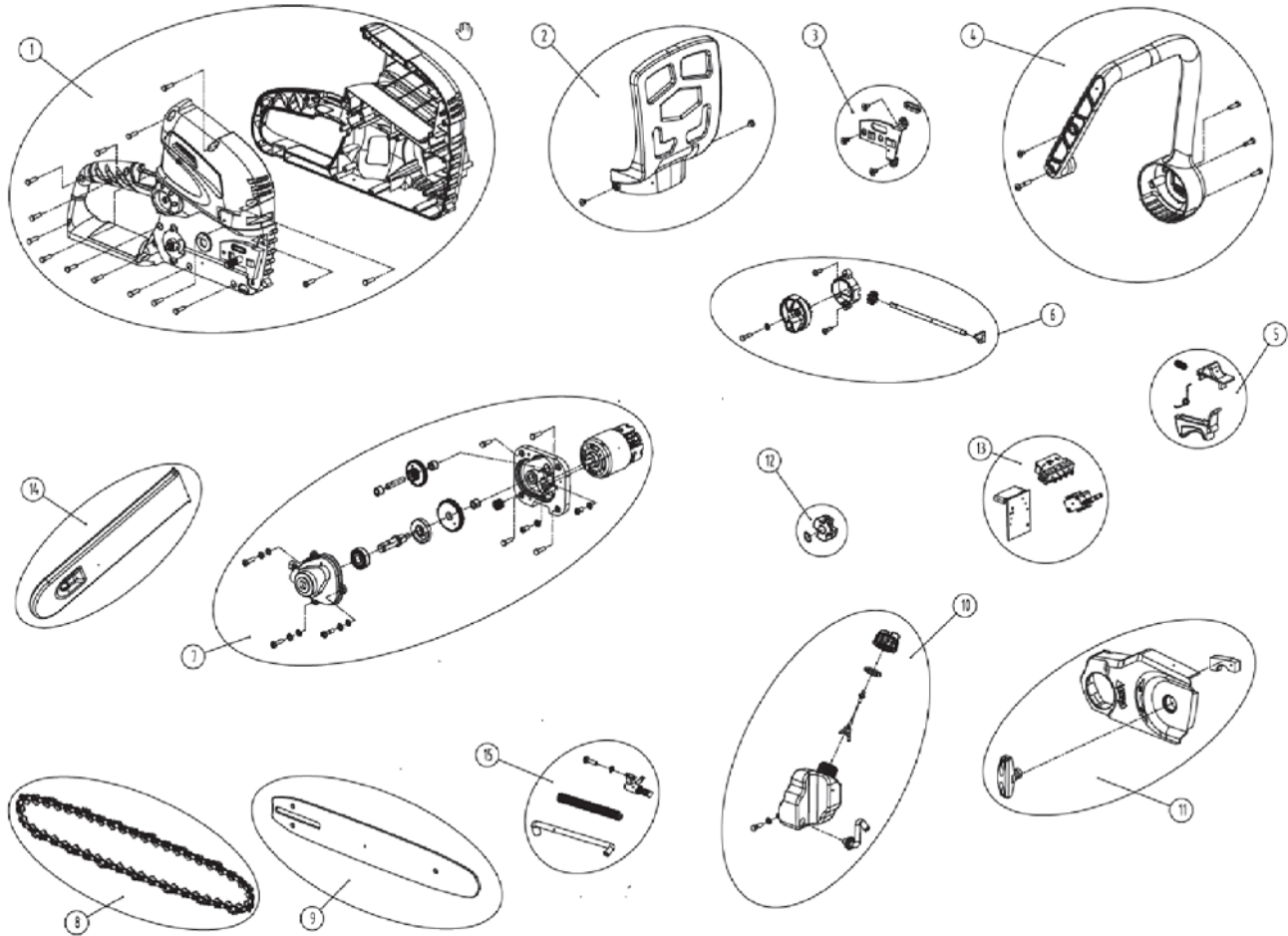




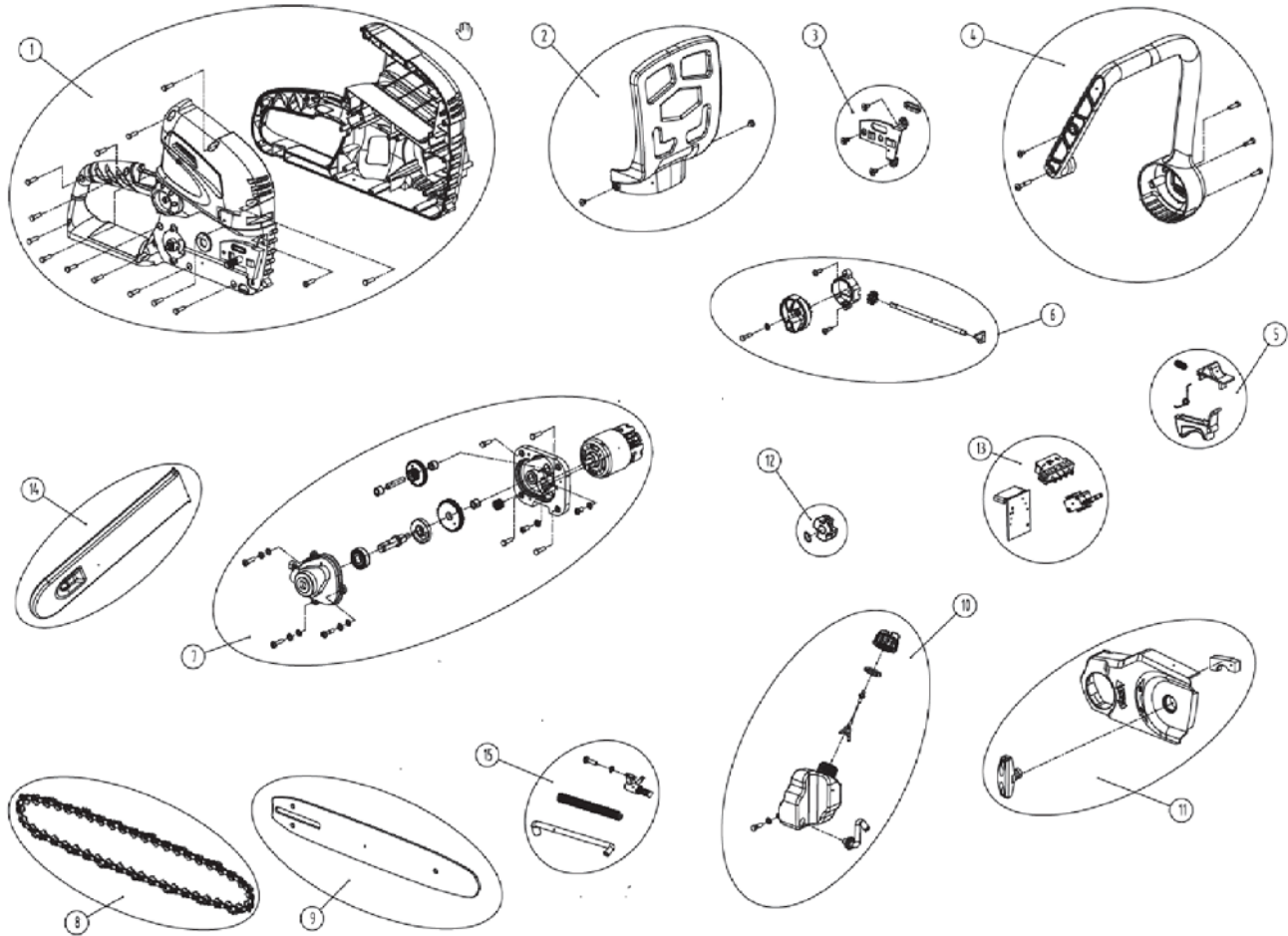
G40CS30 Chain Saw 40V, 20117



Chainsaw G40CS30, 20117

Pos	PNC	Description	Qty	UOM
1	RA34100581	Right casing replacement assembly replacement part	1	Set
		Right casing	1	piece
		Hexagonal socket ST4.0*14-F	14	piece
		Left casing	1	piece
2	RA34103581	Protection plate assembly replacement part	1	Set
		Hexagonal socket pan head self-tapping screw ST3.8*9-F (pan head 6.5, white Dacromet coated)	2	piece
3	RA33301583	Guard plate	1	piece
		Cutter plate pad assembly replacement part	1	Set
		Cross recess countersunk head self-tapping screw	3	piece
		Blade plate pad	1	piece
		Blade plate oil seal gasket	1	piece
4	RA34102581	Auxiliary handle assembly replacement part	1	Set
		Auxiliary handle	1	piece
		Cross recess pan head self-tapping screw ST4.2x8	1	piece
		Hexagonal socket pan head self-tapping screw ST4.2*25-F	1	piece
5	RA36200581A	Hexagonal socket ST4.0*14-F	3	piece
		40V pole/chain saw tool control panel assembly replacement part	1	Set
		Casing insert seat	1	piece
		40V pole/chain saw tool control panel	1	piece
		Switch button	1	piece
		Spring 4406-3703-00050	1	piece
		Switch torsion spring	1	piece
		Switch trigger	1	piece
		Two-way switch	1	piece
		Straight plug 4.8 sheath	4	piece
6	RA33904159	Tensioner gear assembly replacement part	1	Set

Pos	PNC	Description	Qty	UOM
		Tensioner block	1	piece
		Tensioner gear shaft	1	piece
		Tensioner gear	1	piece
		Tensioner knob pressure plate	1	piece
		Cross recess pan head self-tapping screw ST3.5x12-F	2	piece
		Tensioner knob	1	piece
		Small washer	1	piece
		Hexagonal socket ST4.0*14-F	1	piece
7	RA36101622V1	40V chain saw 887 DC motor assembly replacement part	1	Set
		40V chain saw 887 DC motor	1	piece
		Gearbox	1	piece
		Spring washer 5	5	piece
		Cross recess pan head screw M5X9	2	piece
		Primary drive gear	1	piece
		Needle bearing HK0608	3	piece
		Secondary driven gear (with flat square)	1	piece
		Oil pump cam	1	piece
		Output shaft	1	piece
		Bearing 6000 2RS	1	piece
		Small washer	3	piece
		Cross recess pan head screw M4x16	3	piece
		Dual gear	1	piece
		Intermediate shaft	1	piece
		Gearbox cover	1	piece
		High temperature gear oil	0,008	KG
8	RA31101420V1	12 inch cutter chain assembly replacement part	1	Set
		12 inch blade chain	1	piece
9	RA31100581V4	12" cutter plate assembly replacement part	1	Set
		12" blade plate	1	piece
10	RA34104581	Oiler assembly replacement part	1	Set
		Oiler cover	1	piece
		Oiler seal gasket	1	piece
		Oiler cover pull line	1	piece



Pos	PNC	Description	Qty	UOM
		Oiler	1	piece
		Oil outlet tube	1	piece
		Small washer	2	piece
		Hexagonal socket ST4.0*14-F	1	piece
		Cross recess pan head screw M4x16	1	piece
		Oil pump assembly	1	piece
		Oil inlet tube	1	piece
11	RA34110583V1	Side cover assembly replacement part		
		Rubber pressure block	1	piece
		Side cover	1	piece
		Lock knob	1	piece
12	RA33902102V2	Sprocket assembly replacement part		
		6-tooth sprocket	1	piece
		Jump ringφ10 (for shaft)	1	piece